



CATALOG 2020

**FORMAL FURNITURE**

# FORMAL FURNITURE

features





#### RESISTANCE TO UV RADIATION

UV radiation leads to changes in the colour, shade, structure and strength of the material. In all products dedicated to outdoor applications, we only use materials resistant to UV radiation whose resistance has been confirmed by the appropriate certification. In the case of varnishes, we use only those with international Qualicoat Class 1 certification.



#### 3-YEAR GUARANTEE

The quality of our products is controlled at every stage of production, and the components we use have the appropriate approvals and certifications. We know the origin of each key subassembly and we know in which geographic location it was made. That's why we give a full 3-year warranty on our products. In the case of contract offers, it is possible to extend the warranty period.



#### RESISTANCE TO FROST

The products with the frost resistance label are designed for outdoor use all year round, without the need to store them for winter. They have resistance to water, snow and below freezing temperatures. Detailed instructions on how to prepare products for the winter season can be found in the instructions for use of each model. For most product groups, such as planters, bonfires, panels, no special treatments are required.



#### PRODUCTION IN ANY RAL COLOUR

The colours given in the product sheets are only suggestions. We are aware, however, that our clients sometimes look for products with an individual appearance or products corresponding to the colour scheme of the existing equipment. Therefore, most of the elements we manufacture can be made in any colour from the RAL palette. For some products, other non-standard finishes are also available (e.g. metallic, pearl, copper finish, etc.)



#### FOR EXTERNAL USE

Outdoor products must handle more factors than those in the interior. Laubo products with this label are resistant to moisture, sun, rain, sudden temperature changes and UV radiation. We try to choose materials that are easy to clean and maintain and have increased resistance to salts and acids contained in rainwater (especially in larger cities). We can make products suitable for use in coastal zones characterized by high atmospheric corrosivity.



#### SECURE PACKING

Large items are prone to breakage during shipping. We protect our planters with styrofoam corners and wrapped with stretch film. For courier and international shipments, additionally, after positioning on the pallet, we protect the sides with HDF boards or polystyrene boards and wrap them again with film. At the end, the resulting package is attached to the pallet with tapes so that there is no shift. In the case of dedicated transports, we cooperate with trusted drivers who transport our products safely and assist with their delivery.

# types of **FRAME MATERIALS**





## STAINLESS STEEL

This material is extremely popular in luxury products of industrial design. Due to alloy additives, it is characterized by resistance to corrosion and weather conditions. Swimming pool basins and other products exposed to the contaminated atmosphere of big cities are made of stainless steel. Polished stainless steel planters have a high gloss. They are brushed

to obtain a matte finish. Stainless steel is one of the most refined and most elegant materials matching modern interiors and gardens. Does not require varnishing, does not patina, and has a beautiful metal structure. We produce our planters from the most resistant alloy of this steel, i.e. 316L stainless steel.



cold white  
RAL 9003



warm white  
RAL 9010



creme  
RAL 9001



graphite  
RAL 7024



anthracite  
RAL 7016



dark graphite  
RAL 7021



RAL color  
on demand

## SAFETY GLASS VSG/ESG

To ensure the safe use of our products, we use only safety glass (VSG). A VSG sheet consists of two glass panes separated by a plastic film, stopping fragments in the event of breakage. In addition, in the case of furniture where the customer has direct contact with glass, e.g. table tops, the glass is toughened by giving it class ESG Safety Glass. The hardening process increases the durability and hardness of the

glass several times. In case of strong impact, it also causes the glass to break into thousands of fine and blunt pieces, and the film holds them in place. Our glass comes in the following finishes: transparent, milky white, brown transparent and black transparent. At the client's request, we can also offer other finishes.

# types of **FABRIC**



## SUNBRELLA FABRIC

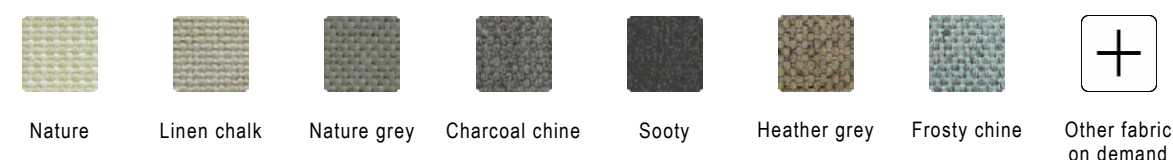
For upholstery, we use Sunbrella fabrics designed for outdoor use. They are braided exclusively of acrylic fibers, to which high-quality dyes are added at when the acrylic is in liquid form. As a result, the color penetrates deeply into the thread structure and remains distinctive for many years of use. Such fabrics are

resistant to sunlight and a special finishing coat protects them against the formation of stains. Sunbrella is the highest quality fabric: very durable but easy to maintain. Beautiful colors and different weave thicknesses make the upholstery look very attractive and harmonize with modern design.

### Sunbrella Solids & Stripes



### Sunbrella Natte



## CERDALON FABRIC

It is a high quality acrylic fabric, intended for outdoor use, also near swimming pools or on the sea beach. The fibers are covered with a layer of Teflon which affects high resistance to dirt. Despite greater water permeability than Sunbrella fabric, Cerdalon tolerates seawater and chlorinated water well. Thanks to the fiber dyeing process, it has high

resistance to pilling and UV rays. Smooth fabrics, such as the Plains series, are durable, resistant to cracking and do not shrink in washing. They are also nice to the touch. A large variety of thickness of weaves and patterns makes the furniture gain individual character at a good price.

### Cerdalon Plains



# types of **VARNISHES**





## LACQUERS WITHOUT METALLIC EFFECT

### SATIN SMOOTH MATT

The standard finish for our planters includes a smooth satin matte varnish. The colors given in the catalog are only a suggestion, because on request we can make any color according to the RAL palette.

### FINE STRUCTURE SATIN MATTE

This structural additive causes the paint to harden and increase scratch resistance. This type of varnish is recommended for applications in commercial spaces, where products are more prone to damage. Delicate matte structure warms the reception of the metal surface, while being easy to clean. The varnish is available in two shades of white, cream, gray, shades of graphite, beige and brown.

### GLOSSY

Planters in this finish are covered with an additional layer of colorless lacquer with a high gloss. The additional layer also provides protection against scratches of colored varnish. Planters can be made in colors according to the RAL palette.

## LACQUERS WITH SPECIAL EFFECTS

### SMOOTH METALLIC VARNISHES

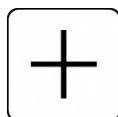
Extremely elegant metallic paints with a fine structure, in which special additives cause discrete sparkles in the sun. Recommended where elegance and prestige are required. Available in gray, copper color, shades of graphite, beige, black and gold.

### FINE STRUCTURE METALLIC VARNISHES

Elegant, durable and resistant metallic lacquers with a fine structure. Special additives cause discrete sparkles in the sun. Recommended where elegance and increased scratch resistance are required, for example in commercial buildings. Available in gray, shades of graphite, beige and brown.

### LACQUERS ON REQUEST

On request, our products can be finished with varnishes according to individual needs, adapting them to the requirements of the project or the existing environment. Varnishes with different textures, colors and special applications are available, for example anti-graffiti paints or heat-resistant varnishes.















COLLECTION 2020

# FORMAL FURNITURE





## FORMAL armchair

Name	Width	Depth	Height	Seat width	Seat depth	Seat height
FORMAL armchair	83	83	79	75	57	42

Dimensions are given in centimetres.



## FORMAL footstool

Name	Width	Depth	Height
FORMAL footstool	75	75	42

Dimensions are given in centimetres.



## FORMAL 2-seater sofa

Name	Width	Depth	Height	Seat width	Seat depth	Seat height
FORMAL 2-seater sofa	180	83	79	180	57	42

Dimensions are given in centimetres.



## FORMAL 2-seater sofa left

Name	Width	Depth	Height	Seat width	Seat depth	Seat height
FORMAL 2-seater sofa left	184	83	79	180	57	42

Dimensions are given in centimetres.



## FORMAL 2-seater sofa right

Name	Width	Depth	Height	Seat Width	Seat depth	Seat Height
FORMAL 2-seater sofa right	184	83	79	180	57	42

Dimensions are given in centimetres.



## FORMAL 2-seater sofa with armrests

Name	Width	Depth	Height	Seat width	Seat depth	Seat height
FORMAL 2-seater sofa with armrests	188	83	79	180	57	42

Dimensions are given in centimetres.



## FORMAL 2-seater corner sofa left

Name	Width	Depth	Height	Seat width	Seat depth	Seat height
FORMAL 2-seater corner sofa left	173	83	79	147	57	42

Dimensions are given in centimetres.



## FORMAL 2-seater corner sofa right

Name	Width	Depth	Height	Seat width	Seat depth	Seat height
FORMAL 2-seater corner sofa right	173	83	79	147	57	42

Dimensions are given in centimetres.



## FORMAL 3-seater sofa

Name	Width	Depth	Height	Seat width	Seat depth	Seat height
FORMAL 3-seater sofa	270	83	79	270	57	42

Dimensions are given in centimetres.



## FORMAL 3-seater sofa left

Name	Width	Depth	Height	Seat width	Seat depth	Seat height
FORMAL 3-seater sofa left	274	83	79	270	57	42

Dimensions are given in centimetres.



## FORMAL 3-seater sofa right

Name	Width	Depth	Height	Seat width	Seat depth	Seat height
FORMAL 3-seater sofa right	274	83	79	270	57	42

Dimensions are given in centimetres.



## FORMAL 3-seater sofa with armrests

Name	Width	Depth	Height	Seat width	Seat depth	Seat height
FORMAL 3-seater sofa with armrests	278	83	79	270	57	42

Dimensions are given in centimetres.



## FORMAL 3-seater corner sofa left

Name	Width	Depth	Height	Seat width	Seat depth	Seat height
FORMAL 3-seater corner sofa left	263	83	79	237	57	42

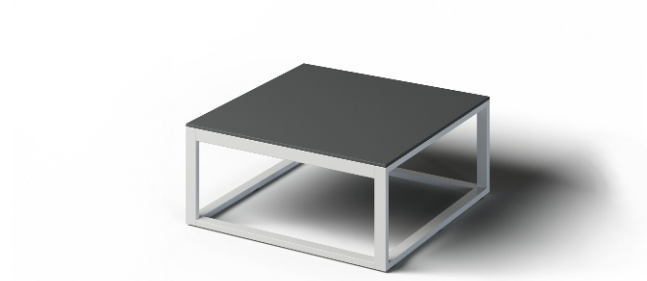
Dimensions are given in centimetres.



## FORMAL 3-seater corner sofa right

Name	Width	Depth	Height	Seat width	Seat Depth	Seat height
FORMAL 3-seater corner sofa right	263	83	79	237	57	42

Dimensions are given in centimetres.



## FORMAL square coffee table

Name	Width	Depth	Height
FORMAL square coffee table	75	75	33

Dimensions are given in centimetres.



## FORMAL rectangular coffee table

Name	Width	Depth	Height
FORMAL rectangular coffee table	150	75	33

Dimensions are given in centimetres.



## FORMAL chair

Name	Width	Depth	Height	Seat width	Seat depth	Seat height
FORMAL chair	55	56	77	55	44	45

Dimensions are given in centimetres.



## FORMAL chair with armrests

Name	Width	Depth	Height	Seat width	Seat depth	Seat height
FORMAL chair with armrests	63	56	77	55	44	45

Dimensions are given in centimetres.





## FORMAL square dining table

Name	Width	Depth	Height
FORMAL square dining table	80	80	73

Dimensions are given in centimetres.



## FORMAL rectangular dining table

Name	Width	Depth	Height
FORMAL rectangular dining table	185	80	73

Dimensions are given in centimetres.

## CUSTOM FURNITURE

At Laubo we do not require the client to adapt to our products. Our products are tailored to the customer. Because they are handmade, all of them can be tailored to individual needs. Modifications may include size, shape, material, colour, pattern.

In the case of commercial applications, we can use elements specific to the brand. In this way, external space will become the showcase of the company.

## CONTACT

M: | +48 691 280 308

Home: | [www.laubo.pl](http://www.laubo.pl)

Mail: | [laubo@laubo.pl](mailto:laubo@laubo.pl)