



lauvo



CATALOG 2020

DESIGN PLANTERS

DESIGN PLANTERS

features





RESISTANCE TO UV RADIATION

UV radiation leads to changes in the colour, shade, structure and strength of the material. In all products dedicated to outdoor applications, we only use materials resistant to UV radiation whose resistance has been confirmed by the appropriate certification. In the case of varnishes, we use only those with international Qualicoat Class 1 certification.



3-YEAR GUARANTEE

The quality of our products is controlled at every stage of production, and the components we use have the appropriate approvals and certifications. We know the origin of each key subassembly and we know in which geographic location it was made. That's why we give a full 3-year warranty on our products. In the case of contract offers, it is possible to extend the warranty period.



RESISTANCE TO FROST

The products with the frost resistance label are designed for outdoor use all year round, without the need to store them for winter. They have resistance to water, snow and below freezing temperatures. Detailed instructions on how to prepare products for the winter season can be found in the instructions for use of each model. For most product groups, such as planters, bonfires, panels, no special treatments are required.



PRODUCTION IN ANY RAL COLOUR

The colours given in the product sheets are only suggestions. We are aware, however, that our clients sometimes look for products with an individual appearance or products corresponding to the colour scheme of the existing equipment. Therefore, most of the elements we manufacture can be made in any colour from the RAL palette. For some products, other non-standard finishes are also available (e.g. metallic, pearl, copper finish, etc.)



FOR EXTERNAL USE

Outdoor products must handle more factors than those in the interior. Laubo products with this label are resistant to moisture, sun, rain, sudden temperature changes and UV radiation. We try to choose materials that are easy to clean and maintain and have increased resistance to salts and acids contained in rainwater (especially in larger cities). We can make products suitable for use in coastal zones characterized by high atmospheric corrosivity.



SECURE PACKING

Large items are prone to breakage during shipping. We protect our planters with styrofoam corners and wrapped with stretch film. For courier and international shipments, additionally, after positioning on the pallet, we protect the sides with HDF boards or polystyrene boards and wrap them again with film. At the end, the resulting package is attached to the pallet with tapes so that there is no shift. In the case of dedicated transports, we cooperate with trusted drivers who transport our products safely and assist with their delivery.

optional
EQUIPMENT





HIDDEN WHEELS

If you need the arrangement of your space to be mobile or you just do not like monotony, choose planters with wheels. Wheels in which our planters can be equipped allow a quick change of arrangement, which is often needed (e.g. in restaurants, hotels or cafes). We make sure that the wheels do not negatively affect the appearance of our products. That is why they are hidden under the raised bottom and practically invisible. Your planter will give the illusion of floating about a centimeter above the ground. Remember, however, that you need an even and hard surface to move planters.



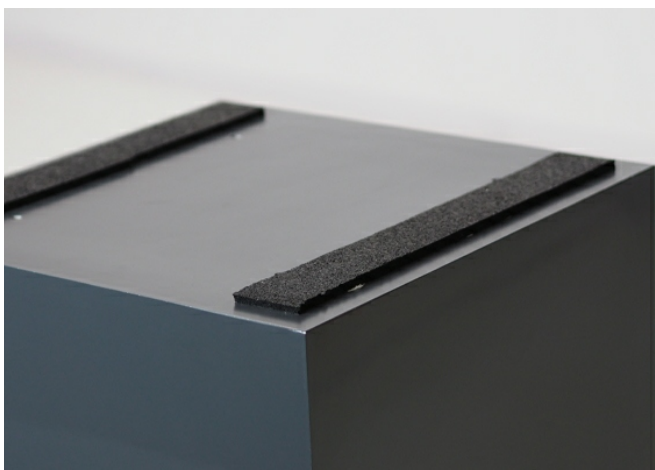
PLANTER WALLS INSULATION

On request, the walls of our planters can be insulated. Isolation helps to protect the rootballs of the plant from freezing in the winter and excessive heating in the summer. To make our insulation, we use an extruded polystyrene, a material commonly used for insulating building foundations. It has a significantly better insulation factor than styrofoam. Unlike styrofoam, it does not absorb moisture, does not degrade over time, and its hardness makes it resistant to soil pressure and root work. In the case of planters, we use a rubber foam that has similar parameters to extruded polystyrene.



ADJUSTABLE FEET WITH VARIABLE INCLINE

Sometimes there is a need to set planters on uneven ground, for example directly on a sloped roof. In order to make the planters stand horizontally, we have designed simple feet that have the ability to change their height and angle of inclination. Therefore, they not only raise the planters, but also bring them to level. At the same time, they give the opportunity to drain water from the planter, making it easier to clean the terrace. In addition, from the inside of the planter, Allen screws make it easy to change the height of the stands after setting the planter in place. If the equipment is set on the terrace deck – rainwater is allowed to flow between the boards without creating puddles. The feet have a large contact surface with the ground, so that they can also be set on a softer floor, e.g. directly on styrodur in the case of green roofs. Pots equipped with stands allow you to maintain a beautiful and functional terrace for many years.



SPACER PADS

In the case of planters in which there are no control wheels or feet, spacer pads placed at the bottom of the planter ensure correct drainage of the excess water. They also allow ventilation and drying of the floor under the planter. They are made of materials resistant to moisture, i.e. EPDM rubber 5mm thick or metal belts (a type dependent on the metal from which the pot was made).



ILLUMINATION OF PLANTERS

We use only professional LED strips produced in Poland to highlight our products. By using brand-name OSRAM LEDs for years, our LED bars have consistent colour and brightness and do not burn out over time. We guarantee all our products meet the same high level of quality.

All LED tapes and bars are designed for outdoor use and have a minimum IP65 water resistance class. It is possible to power 12 V or 24 V DC using typical transformers for LED strips.



ILLUMINATION OF PLANTS

LED lighting fixtures allow you to display plants at dusk and create mood lighting around planters. Strips are completely resistant to atmospheric conditions and moisture. They are powered at a safe voltage of 12 V/ 24 V, and slightly warm in colour. For planters with straight edges, the LED bars are fastened to the inner side of the top of the planter. Special connectors for adjusting the angle of light and easy assembly and disassembly of the light bar. Strips are terminated with a 2 m long cable and are supplied without a transformer.



INTEGRATED TRELLIS FOR CLIMBING PLANTS

If you intend to use climbing plants, the integrated trellis will enable appropriate conditions for their upward growth. As a result you can create green walls to divide space and separate intimate corners. A trellis will also provide adequate support for fragile plants exposed to wind breakage. In round pots, a trellis is mounted in the middle, and in rectangular pots in the middle or at the edge of the planter. Each trellis has the ability to adjust the angle of inclination to allow for vertical installation despite possible unevenness of the ground.



WATER RESERVOIR

If you want your plant to have a constant supply of water, we can equip planters with an elevated drain. As a result, excess rainwater or water from the irrigation system will be collected on the bottom creating a water reservoir there. Remember that the drainage layer should reach over the drain. The drain should be covered with geotextile to protect it from clogging.

types of **MATERIALS**



REFINED ALUMINIUM

We use only special aluminium alloys refined with the addition of magnesium. These alloys have the highest corrosion resistance, thanks to which they are used on the facades of modern buildings and in the shipbuilding industry, where the products are subjected to continuous unfavorable weather conditions. In contrast to galvanized steel, they are resistant

to acids and salts contained in the soil and do not corrode even in the case of scratches on the paint coating. They are also three times lighter than steel while maintaining high stiffness. Our planters are secured in accordance with the facade standards with a double-layer primer and a varnish in a glossy or matte finish.



cold white
RAL 9003



warm white
RAL 9010



creme
RAL 9001



graphite
RAL 7024



anthracite
RAL 7016



dark graphite
RAL 7021



RAL colours
available

STAINLESS STEEL

This material is extremely popular in luxury products of industrial design. Due to alloy additives, it is characterized by resistance to corrosion and weather conditions. Swimming pool basins and other products exposed to the contaminated atmosphere of big cities are made of stainless steel. Polished stainless steel planters have a high gloss. They are brushed

to obtain a matte finish. Stainless steel is one of the most refined and most elegant materials matching modern interiors and gardens. Does not require varnishing, does not patina, and has a beautiful metal structure. We produce our planters from the most resistant alloy of this steel, i.e. 316L stainless steel.

CORTEN STEEL

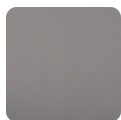
The corten steel façades have been a recognized architectural trend for several years. Corten is a steel with increased resistance to weather conditions. It belongs to the group of steel alloys which automatically develop a protective coating similar to rust under the influence of atmospheric factors. This layer of patina stops further oxidation. Corten does not require

separate surface treatment, which reduces the environmental impact of the product's life cycle. The main advantage of this steel is its modern, industrial appearance and beautiful, warm colour. Formerly used mainly as a construction material, it more and more often appears on facades and in artistic creations.

types of **VARNISHES**



LACQUERS WITHOUT METALLIC EFFECT



SATIN SMOOTH MATT

The standard finish for our planters includes a smooth satin matte varnish. The colours given in the catalog are only a suggestion, because on request we can make any colour according to the RAL palette.



FINE STRUCTURE SATIN MATTE

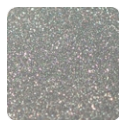
This structural additive causes the paint to harden and increase scratch resistance. This type of varnish is recommended for applications in commercial spaces, where products are more prone to damage. Delicate matte structure warms the reception of the metal surface, while being easy to clean. The varnish is available in two shades of white, cream, gray, shades of graphite, beige and brown.



GLOSSY

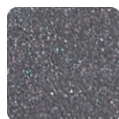
Planters in this finish are covered with an additional layer of colourless lacquer with a high gloss. The additional layer also provides protection against scratches of coloured varnish. Planters can be made in colours according to the RAL palette.

LACQUERS WITH SPECIAL EFFECTS



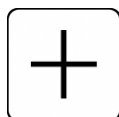
SMOOTH METALLIC VARNISHES

Extremely elegant metallic paints with a fine structure, in which special additives cause discrete sparkles in the sun. Recommended where elegance and prestige are required. Available in gray, copper colour, shades of graphite, beige, black and gold.



FINE STRUCTURE METALLIC VARNISHES

Elegant, durable and resistant metallic lacquers with a fine structure. Special additives cause discrete sparkles in the sun. Recommended where elegance and increased scratch resistance are required, for example in commercial buildings. Available in gray, shades of graphite, beige and brown.



LACQUERS ON REQUEST

On request, our products can be finished with varnishes according to individual needs, adapting them to the requirements of the project or the existing environment. Varnishes with different textures, colours and special applications are available, for example anti-graffiti paints or heat-resistant varnishes.













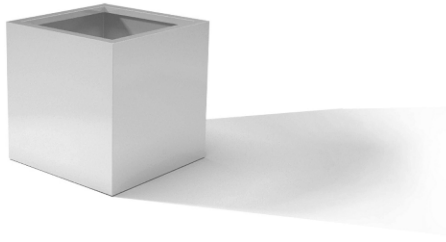




COLLECTION 2020

DESIGN PLANTERS

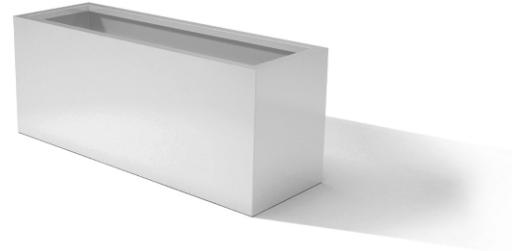




DESIGN cube

Name	Length	Width	Height
DESIGN cube 40	40	40	40
DESIGN cube 50	50	50	50
DESIGN cube 60	60	60	60
DESIGN cube 70	70	70	70
DESIGN cube 80	80	80	80
DESIGN cube 100	100	100	100

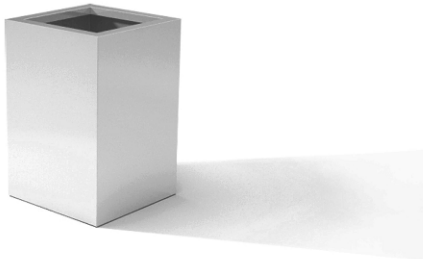
Dimensions are given in centimetres.



DESIGN nava

Name	Length	Width	Height
DESIGN nava 100	100	50	60
DESIGN nava 120/40	120	40	60
DESIGN nava 120/50	120	50	60
DESIGN nava 150	150	50	60
DESIGN nava 170	170	50	60
DESIGN nava 200	200	50	60

Dimensions are given in centimetres.



DESIGN yuvi

Name	Length	Width	Height
DESIGN yuvi 40/75	40	40	75
DESIGN yuvi 40/100	40	40	100
DESIGN yuvi 50/75	50	50	75
DESIGN yuvi 50/100	50	50	100
DESIGN yuvi 50/150	50	50	150

Dimensions are given in centimetres.



DESIGN nuk

Name	Bottom diameter	Top diameter	Height
DESIGN nuk 60	46	60	60
DESIGN nuk 70	54	70	70
DESIGN nuk 90	70	90	90
DESIGN nuk 110	85	110	110

Dimensions are given in centimetres.



DESIGN vase

Name	Bottom diameter	Top diameter	Height
DESIGN vase 60	60	46	60
DESIGN vase 70	70	54	70
DESIGN vase 90	90	70	90
DESIGN vase 110	110	85	110

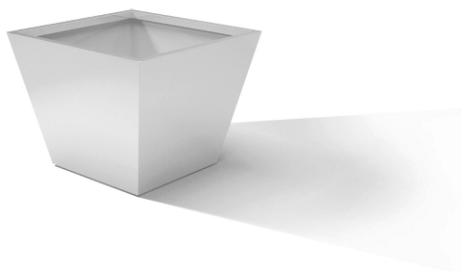
Dimensions are given in centimetres.



DESIGN sund

Name	Bottom diameter	Top diameter	Height
DESIGN sund 150	150	90	29
DESIGN sund 200	200	140	29

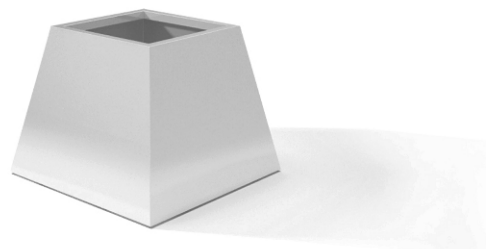
Dimensions are given in centimetres.



DESIGN arco

Name	Bottom width	Top width	Height
DESIGN arco 70	46	70	53
DESIGN arco 90	60	90	70
DESIGN arco 120	92	120	80

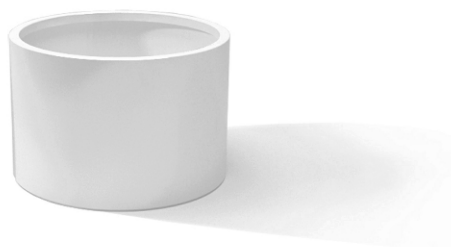
Dimensions are given in centimetres.



DESIGN verso

Name	Bottom width	Top width	Height
DESIGN verso 70	70	46	53
DESIGN verso 90	90	60	70
DESIGN verso 120	120	92	80

Dimensions are given in centimetres.



DESIGN rondo

Name	Diameter	Height
DESIGN rondo 40/75	40	75
DESIGN rondo 40/100	40	100
DESIGN rondo 50/50	50	50
DESIGN rondo 50/75	50	75
DESIGN rondo 50/100	50	100
DESIGN rondo 60	60	60
DESIGN rondo 70	70	70
DESIGN rondo 80	80	80
DESIGN rondo 100/50	100	50
DESIGN rondo 100/75	100	75
DESIGN rondo 100/100	100	100
DESIGN rondo 120/50	120	50
DESIGN rondo 120/75	120	75

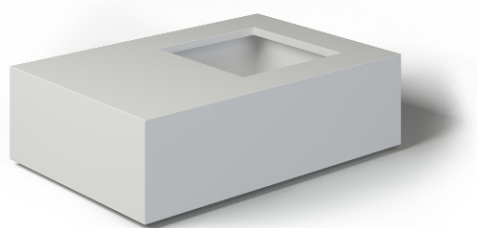
Dimensions are given in centimetres.



DESIGN view

Name	Length	Width	Height
DESIGN view 140	140	40	70

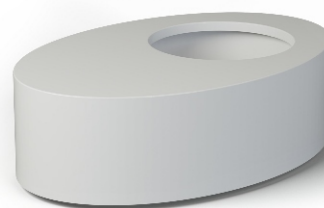
Dimensions are given in centimetres.



DESIGN sit

Name	Length	Width	Height
DESIGN sit 150	150	100	45

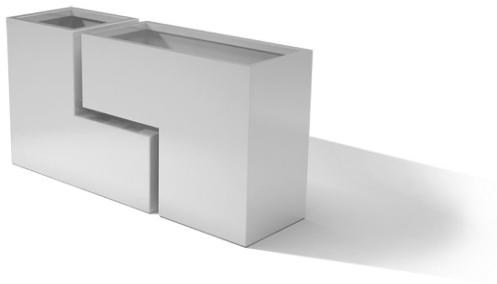
Dimensions are given in centimetres.



DESIGN ovo

Name	Length	Width	Height
DESIGN ovo 150	150	100	45

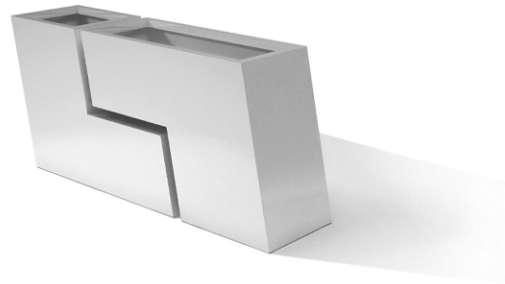
Dimensions are given in centimetres.



DESIGN twins

Name	Length	Width	Height
DESIGN twins 140	60	40	70

Dimensions are given in centimetres.



DESIGN zigzag

Name	Length	Total length	Width	Height
DESIGN zigzag 140	140	165	40	70

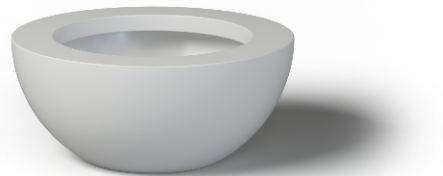
Dimensions are given in centimetres.



DESIGN misa S

Name	Length	Width	Height	Border
DESIGN hemi S 60	60	60	26	5
DESIGN hemi S 80	80	80	35	5
DESIGN hemi S 110	110	110	48	5

Dimensions are given in centimetres.



DESIGN misa L

Name	Length	Width	Height	Border
DESIGN hemi L 60	60	60	26	9
DESIGN hemi L 80	80	80	35	12
DESIGN hemi L 110	110	110	48	16,5

Dimensions are given in centimetres.



DESIGN boll S

Name	Length	Width	Height	Border
DESIGN orb S 60	60	60	42	5
DESIGN orb S 80	80	80	56	5
DESIGN orb S 110	110	110	77	5

Dimensions are given in centimetres.



DESIGN boll L

Name	Length	Width	Height	Border
DESIGN orb L 60	60	60	42	7,5
DESIGN orb L 80	80	80	56	10
DESIGN orb L 110	110	110	77	14

Dimensions are given in centimetres.

CUSTOM PLANTERS

At Laubo we do not require the client to adapt to our products. Our products are tailored to the customer. Because they are handmade, all of them can be tailored to individual needs. Modifications may include size, shape, material, color, pattern.

In the case of commercial applications, we can use elements specific to the brand. In this way, external space will become the showcase of the company.

CONTACT

M: | +48 691 280 308

Home: | www.laubo.pl

Mail: | laubo@laubo.pl